

# American Goat Society

## Milk Production Awards

### 1998



American Goat Society  
PO Box 330  
Broad Run, VA 20137-0330  
(540)349-4709  
e-mail: [ags\\_office@yahoo.com](mailto:ags_office@yahoo.com)





## 1998 Production Awards

Compiled by Gail Pletcher

It's been a long time coming! Now we can finally recognize those hardworking does and bucks and their equally hardworking owners. Although AGS has offered official DHIR milk testing for many years, the records haven't recently been compiled in a Top Ten format .

The records included in this booklet consist of all those lactations of 305 days or less *completed in 1998*. Here are a few rules and regulations.

All records *must be sent to the office*, regardless of whether the doe has met the minimum standard. Stars are automatically awarded, and the records are used in the annual production awards. There is no fee required for does freshening on or after January 1, 2000, but the \$3.00 still applies for does freshening before that date. A list of the standards is available from the office. Bucks will be automatically awarded +S and \*S. No application or fee is required.

The first time a doe makes a record meeting the minimum standards, she receives her star and is assigned an AR number (DHIR testing only), under which all subsequent records will be listed. If she receives her star from a one day test, she is not assigned an AR number.

### TITLES/AWARDS FOR DOES

An AR/\*D (Advanced Registry/star doe) has met the requirements for milk and/or butterfat while on official DHIR testing (305 days or less). A \*D (star doe) has earned the required points on an official one day test. The \*D title is passed down through the generations, if the progeny have also earned stars. Therefore, the \*D daughter of a \*D is called a 2\*D.

A doe that has not have a star can earn one through her progeny.

- \* She can earn her star if she has three \*D daughters or AR/\*D daughters, in any combination.
- \* She can earn her star if she has two +S or AR/+S sons, or one of each.
- \* She can earn her star if she has one +S or AR/+S son and two AR/\*D or \*D daughters.

### TITLES/AWARDS FOR BUCKS

A buck also earns his +S (plus sire) through his progeny.

- + He can earn his plus if he has at least three daughters *out of three different dams* who have earned stars. If three of these daughters are AR/\*D's, the buck is an AR herd sire, and if he is a master champion, he is an ARMCH+S buck. If his daughters are \*D's only, he is called MCH only.
- + He can earn his plus if he has at least two sons who are either AR sires or +S's, or any combination.
- + He can earn his plus if he has one AR or +S son and two \*D daughters.
- + He can earn a second plus (+S) if he has at least three star daughters out of three different dams and two +S sons.

A \*S is an inherited title. A buck is awarded this title at birth (or later) under the following conditions:

His dam is a \*D (one-day test or AR for both milk and butterfat) *and* his sire is either a +S or a \*S whose dam's star was earned by a one-day test or AR for both milk and butterfat *or*

- \* his dam is a \*D (one-day test or AR for both milk and butterfat) *and* his sire's dam is a \*D (one-day test of AR for both milk and butterfat).

### HOW TO READ A RECORD

It's easier to explain by using an example. 2.10-305-1115-79(7.1%)46(4.1%) This means that the doe started her lactation at the age of two years and ten months. In 305 days she milked 1115 lbs. of milk, 79 lbs. of butterfat averaging 7.1% and 46 lbs. of protein averaging 4.1%. When reading the records of the miniature breeds, you will soon be seeing the height (listed in inches and eighths of an inch) at the end of the record.

Enjoy reading the Top Ten lists, and learn to appreciate the dedication of the breeders who are on test, and the animals who have made these high records.

# Nigerian Dwarf Milk Production Awards

1998

Milk

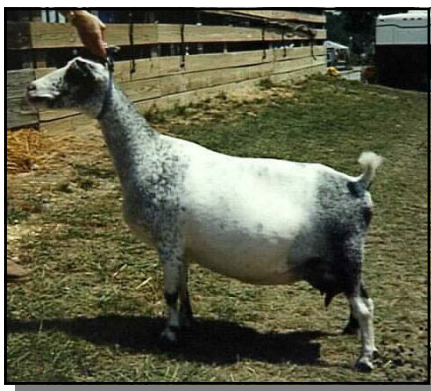


<b>1</b>	<b>Gay-Mor Berry's Jin Rickey 2*D</b> S: Goodwood Lingonberry +S D: Unicorn Farm Nenik Butr Sundae *D	Giliberti	1.11-305- <b>1140</b> -71(6.2%)49(4.3%)
<b>2</b>	<b>ARMCh Unicorn Farm Parnell's Panda *D</b> S: ARMCh Unicorn Farm Tomus Parnell +*S D: Unicorn Farm Nenik Panda	Putcher	2.10-305- <b>1115</b> -79(7.1%)46(4.1%)
<b>3</b>	<b>Rosasharn's Baby USA 2*D</b> S: Goodwood Alamo Messenger +S D: Goodwood Geranium *D	Peterson	5.05-305- <b>1092</b> -72(6.6%)48(4.4%)
<b>4</b>	<b>ARMCh Goodwood Texana *D</b> S: ARMCh Goodwood Kauri Tree +*S D: Willow's Betty White	Lewis	7.00-305- <b>1015</b> -63(6.2%)48(4.7%)
<b>5</b>	<b>Gay-Mor Berry's Holstein 3*D</b> S: Goodwood Lingonberry +S D: Gay-Mor Reggae's Filo Dendrun 2*D	Putcher	1.11-301- <b>998</b> -72(7.2%)47(4.7%)
<b>6</b>	<b>Lil' Dynamite Chanel *D</b> S: Goodwood Ginseng D: Tobhiyah Lady Imari	Smith	4.03-305- <b>987</b> -59(6.0%)46(4.7%)
<b>7</b>	<b>ARMCh Gay-Mor Berry's Jurassic 2*D</b> S: Goodwood Lingonberry +S D: ARMCh Unicorn Farm Parnells Panda *D	Putcher	1.10-292- <b>982</b> -73(7.4%)45(4.6%)
<b>8</b>	<b>ARMCh OTR Minuet in C 3*D</b> S: Goodwood Alamo Messenger +S D: ARMCh Goodwood Kiwi 2*D	Lewis	3.04-305- <b>979</b> -57(5.8%)40(4.1%)
<b>9</b>	<b>Goodwood Madrigal *D</b> S: Goodwood Alamo Messenger +S D: Goodwood Kiwi Angel	Jelke	5.01-305- <b>971</b> -68(7.0%)44(4.5%)
<b>10</b>	<b>Jobi Rita 2*D</b> S: Jobi Mingo D: Goodwood Golden Harmony *D	Jelke	2.07-305- <b>923</b> -66(7.2%)46(5.0%)

# Nigerian Dwarf Milk Production Awards

## 1998

### Butterfat



<b>1</b>	<b>ARMCh Unicorn Farm Parnell's Panda *D</b> S: ARMCh Unicorn Farm Tomus Parnell +*S D: Unicorn Farm Nenik Panda	Putcher	2.10-305-1115- <b>79</b> (7.1%)46(4.1%)
<b>2</b>	<b>ARMCh Gay-Mor Berry's Jurassic 2*D</b> S: Goodwood Lingonberry +S D: ARMCh Unicorn Farm Parnells Panda *D	Putcher	1.10-292-982- <b>73</b> (7.4%)45(4.6%)
<b>3T</b>	<b>Gay-Mor Berry's Holstein 3*D</b> S: Goodwood Lingonberry +S D: Gay-Mor Reggae's Filo Dendrun 2*D	Putcher	1.11-301-998- <b>72</b> (7.2%)47(4.7%)
<b>3T</b>	<b>Rosasharn's Baby USA 2*D</b> S: Goodwood Alamo Messenger +S D: Goodwood Geranium *D	Peterson	5.05-305-1092- <b>72</b> (6.6%)48(4.4%)
<b>4</b>	<b>Gay-Mor Berry's Jin Rickey 2*D</b> S: Goodwood Lingonberry +S D: Unicorn Farm Nenik Butr Sundae *D	Giliberti	1.11-305-1140- <b>71</b> (6.2%)49(4.3%)
<b>5</b>	<b>Goodwood Madrigal *D</b> S: Goodwood Alamo Messenger +S D: Goodwood Kiwi Angel	Jelke	5.01-305-971- <b>68</b> (7.0%)44(4.5%)
<b>6</b>	<b>ARMCh Goodwood Trillium *D</b> S: ARMCh Goodwood Kauri Tree +*S D: Goodwood Killeen	Putcher	7.00-305-876- <b>67</b> (7.6%)39(4.5%)
<b>7</b>	<b>Jobi Rita 2*D</b> S: Jobi Mingo D: Goodwood Golden Harmony *D	Jelke	2.07-305-923- <b>66</b> (7.2%)46(5.0%)
<b>8</b>	<b>ARMCh Goodwood Texana *D</b> S: ARMCh Goodwood Kauri Tree +*S D: Willow's Betty White	Lewis	7.00-305-1015- <b>63</b> (6.2%)48(4.7%)
<b>9</b>	<b>Buttin'Heads Sausage Bwhizcuit 3*D</b> S: Heartwood Whiz Kid D: Buttin'Heads Whole'Wheat Toast 2*D	Rucker	3.00-296-900- <b>62</b> (6.9%)40(4.4%)
<b>10</b>	<b>Lil' Dynamite Chanel *D</b> S: Goodwood Ginseng D: Tobhiyah Lady Imari	Smith	4.03-305-987- <b>59</b> (6.0%)46(4.7%)

# Nigerian Dwarf Milk Production Awards

1998

Protein



<b>1</b>	<b>Gay-Mor Berry's Jin Rickey 2*D</b> S: Goodwood Lingonberry +S D: Unicorn Farm Nenik Butr Sundae *D	Giliberti	1.11-305-1140-71(6.2%) <b>49</b> (4.3%)
<b>2T</b>	<b>ARMCh Goodwood Texana *D</b> S: ARMCh Goodwood Kauri Tree ++S D: Willow's Betty White	Lewis	7.00-305-1015-63(6.2%) <b>48</b> (4.7%)
<b>2T</b>	<b>Rosasharn's Baby USA 2*D</b> S: Goodwood Alamo Messenger +S D: Goodwood Geranium *D	Peterson	5.05-305-1092-72(6.6%) <b>48</b> (4.4%)
<b>3</b>	<b>Gay-Mor Berry's Holstein 3*D</b> S: Goodwood Lingonberry +S D: Gay-Mor Reggae's Filo Dendrun 2*D	Putcher	1.11-301-998-72(7.2%) <b>47</b> (4.7%)
<b>4T</b>	<b>Jobi Rita 2*D</b> S: Jobi Mingo D: Goodwood Golden Harmony *D	Jelke	2.07-305-923-66(7.2%) <b>46</b> (5.0%)
<b>4T</b>	<b>Lil' Dynamite Chanel *D</b> S: Goodwood Ginseng D: Tobhiyah Lady Imari	Smith	4.03-305-987-59(6.0%) <b>46</b> (4.7%)
<b>4T</b>	<b>ARMCh Unicorn Farm Parnell's Panda *D</b> S: ARMCh Unicorn Farm Tomus Parnell ++S D: Unicorn Farm Nenik Panda	Putcher	2.10-305-1115-79(7.1%) <b>46</b> (4.1%)
<b>5T</b>	<b>OTR Circe the Enchantress 4*D</b> S: OTR Fun's Fun Comet D: ARMCh Minuet in C 3*D	Lewis	2.00-305-916-56(6.1%) <b>45</b> (4.9%)
<b>5T</b>	<b>ARMCh Gay-Mor Berry's Jurassic 2*D</b> S: Goodwood Lingonberry +S D: ARMCh Unicorn Farm Parnells Panda *D	Putcher	1.10-292-982-73(7.4%) <b>45</b> (4.6%)
<b>6</b>	<b>Goodwood Madrigal *D</b> S: Goodwood Alamo Messenger +S D: Goodwood Kiwi Angel	Jelke	5.01-305-971-68(7.0%) <b>44</b> (4.5%)
<b>7</b>	<b>Stonewall's Serena *D</b> S: Stonewall's Jumpin Jack Flash D: Goodwood Kiwi Angel	Boger	2.07-305-918-54(5.9) <b>43</b> (4.7)
<b>8T</b>	<b>Buttin'Heads Sausage Bwhizcuit 3*D</b> S: Heartwood Whiz Kid D: Buttin'Heads Whole'Wheat Toast 2*D	Rucker	3.00-296-900-62(6.9) <b>40</b> (4.4)
<b>8T</b>	<b>ARMCh OTR Minuet in C 3*D</b> S: Goodwood Alamo Messenger ++S D: ARMCh Goodwood Kiwi 2*D	Lewis	3.04-305-979-57(5.8) <b>40</b> (4.1)
<b>9T</b>	<b>ARMCh Goodwood Trillium *D</b> S: ARMCh Goodwood Kauri Tree ++S D: Goodwood Killeen	Putcher	7.00-305-876-67(7.6) <b>39</b> (4.5)
<b>9T</b>	<b>ARMCh Gladys Porter Zoo Usiku *D</b> S: Goodwood Z Ali-Babba ++S D: GPZ Bibi	Smith	5.04-305-786-52(6.6) <b>39</b> (5.0)
<b>10</b>	<b>ARMCh Gay-Mor Berry's Jurassic 2*D</b> S: Goodwood Lingonberry ++S D: ARMCh Unicorn Farm Parnells Panda *D	Putcher	.11- 287-799-57(7.1) <b>38</b> (4.8)

# Nigerian Dwarf Milk Production Awards

1998

## Stars Earned by One Day Tests

<b>MCh Raha Acres Twink's Pixie *D</b> S: Goodwood Mr. Periwinkle +S D: Dav-Lyn Twinkle Toes 4.06-73 days fresh, 4.2 lbs. of milk, 4.1% bf	Bussey	<b>Total 46.71 pts</b>
<b>Karim's Falling Star *D</b> S: GPZ Ali's Pirate D: Dark Star Elektra 3.01-42 days fresh, 3.9 lbs. of milk, .5.4% bf	Clanin	<b>Total 47.80 pts</b>
<b>MCh Karim's Little Dove *D</b> S: Reese's Buster D: Karim's Bunny 3.01-41 days fresh, 4.4 lbs. milk, .6.6% bf	Clanin	<b>Total 58.45 pts</b>
<b>Karim's Little Pearl *D</b> S: Reese's Buster D: Karim's Hallelujah 1.11-43 days fresh, 3.0 lbs. milk, 5.3% bf	Clanin	<b>Total 37.02 pts</b>
<b>Karim's White Sage *D</b> S: GPZ Ali's Pirate D: Karim's Hallelujah 4.00-40 days fresh, 3.0 lbs. milk, 6.3% bf	Clanin	<b>Total 40.18 pts</b>
<b>Deer Creek Chestnut Tree's Rosie *D</b> S: Stonewall's Chestnut Tree D: Dav-Lyn Sunny 2.11-34 days fresh, 3.3 lbs. milk, 6.1% bf	Landers	<b>Total 42.55 pts</b>
<b>Heartwood Farm Snickers *D</b> S: Goodwood Pinball Wizard +S D: Pine Cone Valley Armeria 4.05-44 days fresh, 3.1 lbs. milk, 3.8% bf	Landers	<b>Total 39.60 pts</b>
<b>ARMCh Rosasharn's Baby Bella *D</b> S: Mulberry Farm's Peter Pan D: Mulberry Farm's Friede 7.01-30 days fresh, 4.8 lbs. milk, 5.0% bf	Petersen	<b>Total 57.88 pts</b>
<b>Rosasharn's Baby USA 2*D</b> S: Goodwood Alamo Messenger +S D: Goodwood Geranium *D 6.02-273 days fresh, 2.7 lbs. milk, 6.3% bf	Petersen	<b>Total 48.72 pts</b>
<b>Rosasharn's Melodie GI 2*D</b> S: Rosasharn's Baby Ivan +S D: Goodwood Geranium *D 1.11-42 days fresh, 3.5 lbs. milk, 5.1%.bf	Petersen	<b>Total 41.96 pts</b>
<b>Stonewall's AME Ebi 2*D</b> S: Stonewall's Jumpin Jack Flash D: Goodwood Tinkerbelle *D 3.01-50 days fresh, 3.6 lbs. milk, 5.0% bf	Petersen	<b>Total 43.14 pts</b>
<b>Stonewall's Baby 'Uddercup *D</b> S: Brush Creek Shiloh D: Goodwood Rosa Parks 4.01-37 days fresh, 4.5 lbs. milk, 5.6% bf	Petersen	<b>Total 54.50 pts</b>

<b>Green Gate Cinderella *D</b> S: MCh Chisholm Trail Walker D: WGF Tess 1.02-51 days fresh, 2.6 lbs. milk, 7.0% bf	Roye	<b>Total 37.32 pts</b>
<b>Green Gate Summer Breeze 2*D</b> S: Piddlin Acres Detonator D: Goodwood Summer Noel *D 1.08-73 days fresh, 2.6 lbs. milk, 8.1% bf	Roye	<b>Total 41.86 pts</b>
<b>Buttin'Heads Mink Stole' *D</b> S: Karim's Ole' +S D: ARMCh Columbus Zoo Godiva *D 4.06-45 days fresh, 3.6 lbs. milk, 6.7% bf	Rucker	<b>Total 49.25 pts</b>
<b>Buttin'Heads Qwhizo Dip *D</b> S: Heartwood Whiz Kid +S D: Buttin'Heads Guacamole 2*D 2.04-139 days fresh, 2.2 lbs. milk, 6.2% bf	Rucker	<b>Total 35.06 pts</b>

## **New Plus Sires (+S)**

<b><u>Goodwood Zeppo +S</u></b> ARMCh Goodwood Kenya +S Goodwood Z Ali-Babba +*S Hilltops Alaska's Romeo +S	Richard/Van Beureny	S: Pine Cone Valley Domino D: Pine Cone Valley Black Satin
<b><u>ARMCh Hayseed Farm King Alfred MM +S</u></b> Gay-Mor Al's Heather 2*D Gay-Mor Al's Vanilla Karamel 2*D Gay-Mor Al's Vanilla Krystal 2*D	Putcher	S: Old Orchard Magic Man D: Goodwood Chalupa
<b><u>ARMCh Unicorn Farm Tomus Parnell +*S</u></b> ARMCh Unicorn Farm Parnells Panda *D Unicorn Farm Parab Robin *D Unicorn Farm Parnell's Flounce 2*D Unicorn Farm Parnell's Freckles 2*D Unicorn Farm Pavel Chantilly *D Krossroad Al's Jacinda *D	Smith	S: ARMCh GPZ Olympic Tomba+S D: ARMCh GPZ Usiku *D

## **Interesting Data**

<b><u>LONGEST EXTENDED LACTATION:</u></b> Gay-Mor Reggae's Nestle Quik 2*D	Putcher	<b>3.07-632-2925-209-134</b>
<b><u>HIGHEST LIFETIME MILK PRODUCTION:</u></b> Gay-Mor Reggae's Nestle Quik 2*D	Putcher	<b>1163-4609-317-211</b>
<b><u>LOWEST SOMATIC CELL COUNT:</u></b> ARMCh Buttin'Heads Sausage Bwhizcuit 3*D	Rucker	<b>0.6 (linear format)</b>
<b><u>YOUNGEST DOE ON TEST:</u></b> Gay-Mor's Dandy Kosmos	Jelke	<b>8 months</b>
<b><u>OLDEST DOE ON TEST:</u></b> ARMCh Goodwood Kiwi 2*D	Lewis	<b>9 years four months</b>

# All-Time Breed Leaders

## MILK PRODUCTION:

Gay-Mor Reggae's Nestle Quik 2\*D (1997) Putcher 3.07-305-1499-106(7.1%)64(4.3%)

## BUTTERFAT:

Gay-Mor Reggae's Nestle Quik 2\*D (1997) Putcher 3.07-305-1499-106(7.1%)64(4.3%)

## PROTEIN:

Gay-Mor Reggae's Nestle Quik 2\*D (1997) Putcher 3.07-305-1499-106(7.1%)64(4.3%)

## LONGEST EXTENDED LACTATION:

Gay-Mor Reggae's Nestle Quik 2\*D (1998) Putcher 3.07-632-2925-209-134

## HIGHEST LIFETIME MILK PRODUCTION:

Gay-Mor Reggae's Nestle Quik 2\*D (1998) Putcher 1163-4609-317-211

## LOWEST SOMATIC CELL COUNT:

ARMCh Buttin'Heads Sausage Bwhizcuit 3\*D (1998) Rucker 0.6 (linear format)

## YOUNGEST DOE ON TEST:

Gay-Mor's Dandy Kosmos (1998) Jelke 8 months

## OLDEST DOE ON TEST:

ARMCh Goodwood Kiwi 2\*D (1998) Lewis 9 years four months



# Standard Breeds Milk Production Awards 1998

## Milk, Butterfat and Protein

### French Alpine

- 1** Sugar Ridge Lorna \*D Nelson 5.11-305-3001-106(3.5100(3.3))  
S: Sanstorm's Donovan +B  
D: Sugar Ranch Loretta

### La Mancha

None on test

### Rubian

- 1** Redbud NB Nod \*D Nelson 2.10-289-2744-105(3.8)96(3.5)  
S: Nickel's AFC Barrister AI  
D: Redbud Fancy Surprise
- 2** Redbud NB Wynken \*D Nelson 2.10-242-2709-90(3.3)88(3.2)  
S: Nickel's AFC Barrister AI  
D: Redbud Fancy Surprise
- 3** Liberty Mtn Praise Destiny \*D Nelson 3.02-270-1791-85(4.7)63(3.5)  
S: Price-o-the-Field Parise Caleb  
D: Liberty Mtn Bright Desta-Nee

### Oberhasli

None met minimum standards

### Saanen

- 1** Bluff TP CV Julie III 4\*D Nelson 1.02-262-1864-62(3.3)53(2.8)  
S: GCh Two Cedars Cleo +\*B  
D: Bluff Top AI Vanna AI 3\*M

### Toggenburg

- 1** Khimaira Merle's Heidi 5\*D Smith 1.03-305-2022-64(3.2)63(3.1)  
S: Violet Star Merle \*B  
D: Emporer Dillon Lantana AI 4\*D